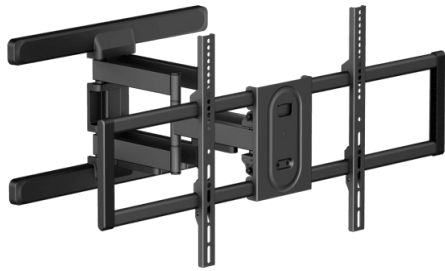




WALL STAND SBOX PLB-8148



PLB-8148 / SBOX

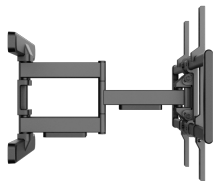
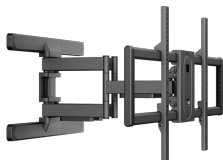
Doživite vrhunsku fleksibilnost i udobnost sa SBOX PLB-8148 zidnim nosačem. Dizajniran za podršku širokog raspona veličina ekrana od 43" do 100", ovaj čvrsti čelični nosač nudi neprevaziđenu svestranost. Jednostavno nagnite svoj TV do 5° prema gore ili do -10° prema dolje i okrenite ga punih 120° za savršen kut gledanja.

Sa svojom robusnom konstrukcijom i jednostavnom instalacijom, možete sigurno montirati svoj TV bez brige. Optimizirajte svoj prostor i uživajte u uređenom zabavnom okruženju.

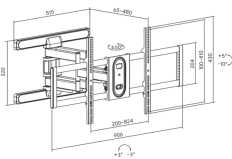
SPECIFICATIONS

General attributes

Stand type	Tilt/swivel - with handle
Minimum VESA	200x200
Maximum VESA	800x400
Load capacity (kg)	60
Minimum screen size	43 / 109 cm
Maximum screen size	100 / 254 cm
Vertical tilt	5° / -10°
For curved screens	No
Cable guides	Yes
Color	Black
Warranty	60-month warranty
Horizontal swivel	+60° / -60°
Spirit level	No
Detachable VESA plate	No
Installation	Wall
Material	Steel
Dimensions (mm)	480x906x430
Weight (g)	9000
Finishing	Powder coating
Notice	When mounting, pay attention to VESA and the screw type used by individual TV manufacturers!
Minimum distance from wall (mm)	65
Maximum distance from wall (mm)	480
Min Charging Power (W)	0.00
Max Charging Power (W)	0.00
Primary Battery Voltage (V)	0.00
Secondary Battery Voltage (V)	0.00



Dimensions (mm)



LOGISTIČKI PODACI

Transportno pakiranje

Shipping packaging - Quantity	2
Shipping packaging - Unit	com
Shipping packaging - Weight	18.4



Shipping packaging - Length	95
------------------------------------	----

Shipping packaging - Width	34
-----------------------------------	----

Shipping packaging - Height	16
------------------------------------	----

Palette - Quantity	40
---------------------------	----

Komercialno pakiranje

Commercial packaging - Quantity	Yes
--	-----

Commercial packaging - Unit	com
------------------------------------	-----

Commercial packaging - Weight	9
--------------------------------------	---

Commercial packaging - Length	93
--------------------------------------	----

Commercial packaging - Width	32.5
-------------------------------------	------

Commercial packaging - Height	7
--------------------------------------	---
