



**AIR CONDITIONER**  
UNIVERSAL REMOTE CONTROL RC-01408

**User's instruction for all-purpose air conditioner remote controller**

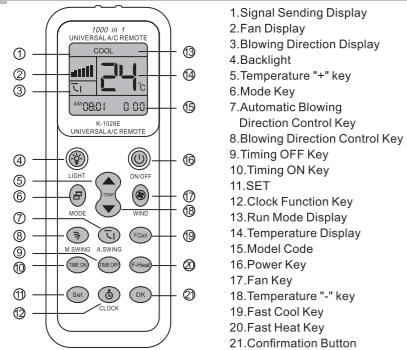
**Product Introduction**

Model K-1028E All-purpose Air Conditioner Remote Controller has been designed to remotely control various brands and models of the air conditioners. This product is characteristic of point-to-point fast brand searching and automatic digital code searching with low power consumption, complete functions, long transmission distance. Easy setting, simple operation and fresh visual appearance and comfortable hand feel which can facilitate you with unlimited convenience. The product has a large LCD screen which provides easy setting and operation. It has built-in clock, on/off timer and night illumination function which have facilitated more convenience for you.

**No need to set**

Once the battery is loaded, the remote control can control the mainstream brands on the market: Gree (YB0F2), Mitsubishi Heavy Industries 388, Midea, Toshiba, Chunlan, Haier, Hualing and other brands.

**Panel Description:**



1. Signal Sending Display
2. Fan Display
3. Blowing Direction Display
4. Backlight
5. Temperature "+/-" key
6. Mode Key
7. Automatic Blowing Direction Control Key
8. Blowing Direction Control Key
9. Timing OFF Key
10. Timing ON Key
11. SET
12. Clock Function Key
13. Run Mode Display
14. Temperature Display
15. Model Code
16. Power Key
17. Fan Key
18. Temperature "-" key
19. Fast Cool Key
20. Fast Heat Key
21. Confirmation Button

**Restore factory settings**

press the button "set" and "air volume" simultaneously for three seconds to restore the factory settings.  
Note: when the battery is loaded, the combination code does not have timing function. To use the timing function, please control according to the setting method described in the instruction book, which is corresponding to the model.

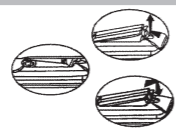
**Remarks:**

**Fast Cool/Heat Key**

- Press "Fast Cool" key to automatically set the machine as refrigerating mode, 21°C, middle wind, automatic blowing direction;
- Press "Fast Heat" key to automatically set the machine as heating mode, 27°C, middle wind, automatic blowing direction.

**Battery Installation:**

1. Remove the battery cover of the remote control, install two new 2x AAA batteries;
2. Install the battery cover. The time will appear in the left corner of LCD display.



**Setting of Remote Control**

This remote controller has three setting modes that are marked as A, B and C. Please select one mode for operation.

**A The brand corresponding point-to-point fast searching**

1. Manually plug-in the air conditioner, aim the remote control at the receiving window of the air conditioner.
2. Press the code key that corresponds to your brand and hold until the air conditioner is started by giving out a sound signal. Release the key and the setting is completed.

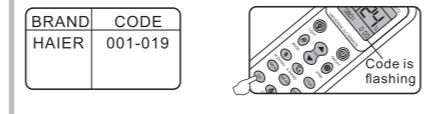


**Table of brand corresponding keys**

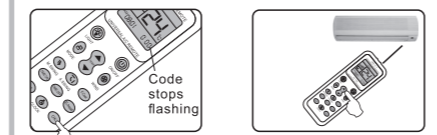
GREE/ Haier	MITSUBISHI/ CHANGHONG	SHARP/ KELONG	MITSUBISHI/ OTHER	LG/ SAMSUNG
SANYO/ HISENSE	CHIGO/ DAIKIN	FUJITSU/ GARRIER	CHUNLAN/ AUX	SHINCO/ AUCMA

**B Manually input code**

1. Manually plug-in the air conditioner, find the type of the air conditioner in the "Code Table", and find the first code, for example: Haier
2. Hold SET button (for about three seconds) until the conditioner type code flickers in the window, press Temperature "▲" or "▼" buttons until the desired code flickers in the window. When the code is right, the air conditioner will start.

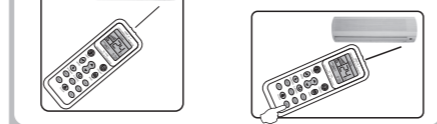


3. Press OK button and the selected conditioner type code will stop flickering.
4. Test whether the remote control button has been effectively set. If yes, setting completes. And if no, repeat steps 2-3.



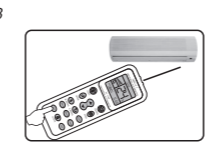
**C Digital automatic search type**

1. Manually plug-in the air conditioner, aim the remote control at the receiving window of the air conditioner
2. Hold SET button (for about six seconds) until the conditioner type code changes in the window, indicating you have entered the high-speed conditioner type search status, press OK button to stop searching until the air conditioner automatically starts.



JX-1705

Test whether the functions of remote control buttons (excluding Temperature and buttons, and SET button) are correct. If yes, the code is effectively set. If not, press SET button to continue once the search.



**Set Time Function**

Press CLOCK button (for three seconds) to enter the clock setting status, and the clock will flicker. Use the Temperature "▲" or "▼" buttons to adjust the current time, and press CLOCK button again to exit setting.



**Timing ON/OFF Function**

To configure the timer function of the original remote control, press TIME ON or TIME OFF buttons, and the air conditioner timer lights will go on, indicating the air conditioner has entered the timed status.

⚠ The timed ON function of some of the air conditioner types is only valid only in the Power Off status.



- This remote control is effective if the air conditioner receiver works normally.
- If this remote control is intended to be not in use for a long time, please remove the batteries.
- It may possibly caused internal program disorder if this remote control is not operated correctly, in case of that, please take out the battery, and install the batteries 35 minutes later, then the remote control may recover normal.

**Applicable brand and code list**

Brand	Code	Brand	Code	Brand	Code	Brand	Code	Brand	Code
ACCOM	980	DAKE	861	HYUNDAI	780-789	PEREG	998	TADAIR	501-508, 509, 532
ADC	861	DAOTIAN	821-824	INYCIN	475-483	PIPINGXINHUABO	290		501, 508, 509,
AIDELONG	293-295	DELONGHI	900	JIANGNAN	359	PILOT	9021	TADIRAN	532, 630, 969,
AITE	296-299	DIY	044, 090, 092, 095	JIALE	358	PUYI	862		978, 979, 991
AKIRA	796-797			JMSTAR	360	QIXING	393	TAIYA	862
AMCOR	501, 508, 509, 532, 973, 978, 979	DUNAN	336	JINBEIJING	361-362	RAYBO	371-383	TCL	120-133
AMICO	982	DONGXIA	344-335	JINDA	491-492	RHOSS	903	TEAC	850-859
ALPIN	989-991, 998	DONGXINBAO	260-268	JINSONG	363-365	RICAI	394	TECO	831-834
AUCMA	201-229, 933	ELECTER	921-986	JOHNSO	282	RIJIANG	395-397	TIANKONGTAO	424
AUX	180-199	ELECTROLUX	471-474, 250, 960	KANGLI	368-370	ROWA	383-385	TIANYUAN	425-428
AOKE	301-302	FEDDERS	887	KELONG	110-119	SACON	414	TOBO	250-260
AOLI	300	FEIEDRICH	879	KLIMATAIR	797-800	SAMSUNG	610-629	TONGLI	429-430
APTON	862	FEIGE	829-830	KONKA	366-367	SANYO NEC	500-550, 860, 943, 946	TOYO	825-828
BAIXUE	299	FEILU	240-249	KRIS	804-805	SANZUAN	190	TOSHIBA	630-639
BEIJINGJIAN	304	FERRROLIT	901	KT02-D001	283	SAPORO	861	TRANE	812-816
BIG-THUMB	331	FIRST	864	KT02-D002	284	SAST	450-452	UNI-AIR	369
BLUE STAR	887	FRESTECH	270-279, 944, 945	KTY001	285	SENSOR	860	UTTLEDUCK	454-456
BOERKA	630	FUJITSU	700-719	KTY002	286	SERENE	499	VIDEOCON	884
BOERKA	305-306	Funiki	992	KTY003	287	SHAMEI	400	WANBAO	431-433
BOSHI	310	GALANZ	134-149, 936-940	KTY004	288	SHANGLING	403-409	WANGZI	861
BOSHIGAO	308-309	GEER	342-343	KTY005	289	SHANYE	862	WEILI	434-443
BORLER	307	GLEE	280	LG	600-609	SHANXING	401-402		553-576
CAIXING	311	GOLDSTAR	303	LIANGYU	780	SHARP	720-739	WEITELI	444
CARRIER	600, 699, 890, 899	GREE	000, 020-039	LIKEAIR	386-387	SHENBAO	401-411	WHIRLPOOL	770-774
CHANGFENG	190	GUANGDA	345-346	LITTLESWAN	453	SHENGFENG	412	WUFENG	445-446
CHANGFU	835-838	GUQIAO	344	LONGHE	861	SHENGFENG FELLU	413	XINGHE	462-463
CHANGLING	312-323	HAIER	001-019	LOREN-SEBO	801-803	SHINCO	200-209	XINLE	457-460
CHANGHONG	059-079, 934, 947	HELTON	863	MCQUAY	790-795	SHINING	415	XILENG	448-449
CHENGYUAN	324	HEMILTON	095	MIDEA	040-058	SHUANGLU	416-418, 948	XINLING	461
CHIGO	080-099	HICON	391-392	MEILING	388-391	SIGMA	447	XIONGDI	862
CHUANGHUA	325-328	HISENSE	230-239	MINGXING BOYN	290	SOGO	291	YAIR	467-471, 044
CHUANYUAN	861	HITACHI	640-659	MINXING BOYN	290	SOGO	291	YAIR	467-471, 044
COLROLLA	861	HONGYI	347	MITSUBISHI	551-599	SONGLINXIA	862	YAOMA	470-977
CHUNLAN	170-179	HUABAO	100-109	MITSUKA	904	SONGXING	419	YIDONG	499
CONSUL	993	HUAGAO	348	NATIONAL Panasonic	660-589	SOVA	292	YORK	775-779
CONROWA	337-341	HUAMEI	351-352	NIKKO	810-811	SOVA	420	YUTU	484-490
CORONA	760-769	HUANGHE	353	NISO	398-399	SOWA	862-863	ZHONGYI	493-494
CROWN	861	HUALING	150-169, 045	NISO	497	SOYEA	421-422	ZUODAN	495
DAEWOO	332-333	HUAWEI	281	NORCA	994	SPEED	987	YUETU	881-882, 949
DAIKIN	740-759	HUIFENG	354-356	OLYMPUS	995-996	SRTC	432		496, 498, 821-
DAJINXING	329-330	HUIFENG	357, 360	OPAL	997	STARLIGHT-ARCON	880	OTHER	828, 839-849, 865-877, 905-976, 999
				PANDA	464-466	SUNBURG	817-820		

⚠ This company reserves the right to Interpretation of the User's Manual. Design and technical parameters may vary without notice.

**SBOX** EC REP SMIT ELECTRONIC d.o.o.  
Metanska 1, KUTINA, CROATIA  
Tel. +38544680704  
info@smit-electronic.hr

Product name: Remote control for Air Conditioner  
Model: RC-01408  
Rated voltage: ~ 3V  
Rated current: 25 mA  
S/N Production batch number: RC01404012026

Manufacturer: SBOX TECHNOLOGY LTD. FLAT 906, 9/F., WORKINGPORT COMM. BLDG., 3 HAUFOOK ST., TSIM SHA TSUI, KOWLOON, HONG KONG, info@sbox.biz, www.sbox.biz

CE RoHS

22 PAP

Made in China.